

IN STOCK
NOW

Tarasafe Ultra H₂O

High performance vinyl safety flooring for wet and dry, applications.

Pavimento de seguridad antideslizante de altas prestaciones para aplicación en zonas secas y húmedas.



Compact sheet

R11

Slip Resistant

C

Barefoot

HSE 36+

Slip Resistant

20

R_{tm}/R_z

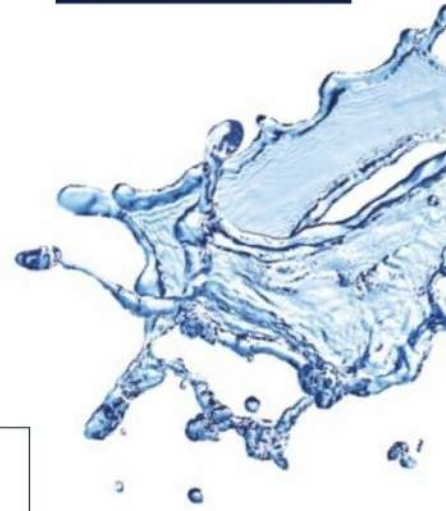
Roughness

Clase 3

De Resbaladidad DTE



Easy to cut



SAFETY FLOORING

A sustainable choice



100% recyclable
39% recycled content



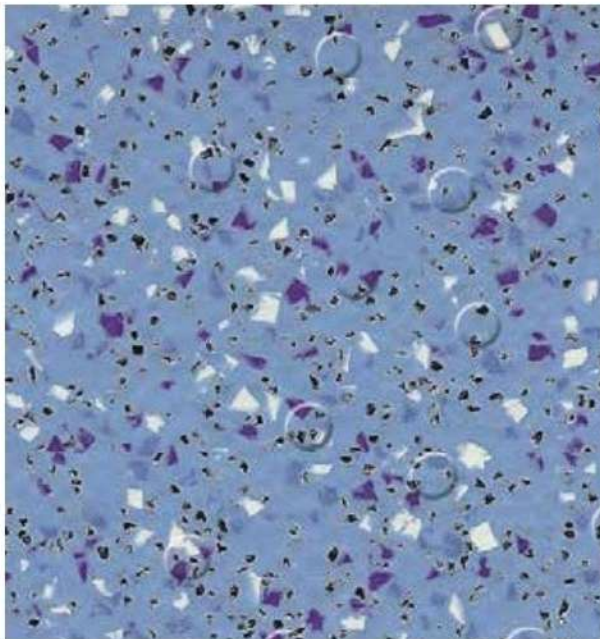
REACH compliant



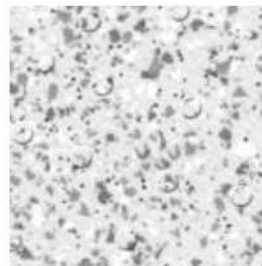
VOC < 100 µg/m³



Suitable for both barefoot and shod use
Apto para pies descalzos y calzados



7413 Ocean Blue
NCS: 3030-R90B / LRV: 31.8



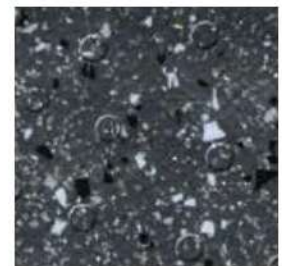
7720 Iceberg
NCS: 1002-B / LRV: 60.6



7325 Seashore
NCS: 1005-Y20R / LRV: 63.0

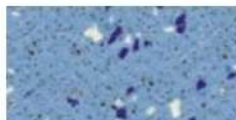


7746 Stone
NCS: 5502-B / LRV: 23.6

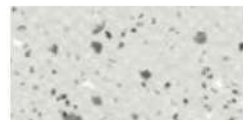


7732 Gravel
NCS: 7502-B / LRV: 9.7

This range complements the **Tarasafe Ultra** collection / *Esta gama complementa la colección Tarasafe Ultra*



7482 Halite
NCS: 3030-R90B / LRV: 31.8



8701 Opal
NCS: 1500-N / LRV: 59.1



8709 Granite
NCS: 5502-B / LRV: 25.4



8717 Obsidian
NCS: 7502-B / LRV: 10.1



7383 Diopside
NCS: 1005-Y20R / LRV: 59.6

Ask for the Tarasafe Ultra sample card!
¡Se puede pedir el catálogo Tarasafe Ultra!
NCS: Natural Colour System
LRV: Light Reflectance Value



Scan here for matching WELD RODS

Gerflor[®]